



Australian Government
Austrade

2009-10 EMDG 'All in One' smart form Installation Instructions

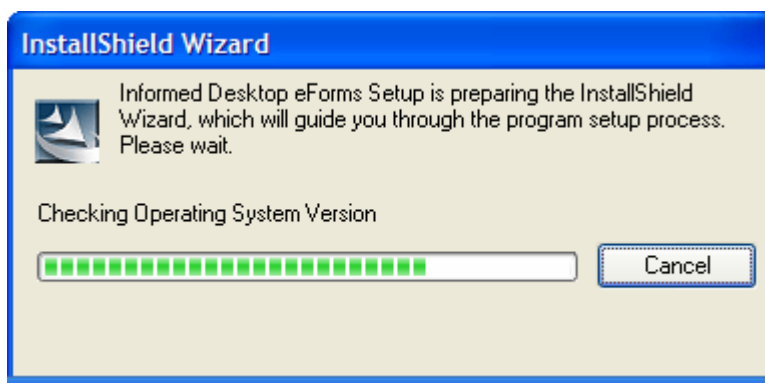
To install the Informed Filler software and the 2009-10 EMDG smart form on your PC follow the instructions below.

Please Note: this software is only suitable for a Windows environment.

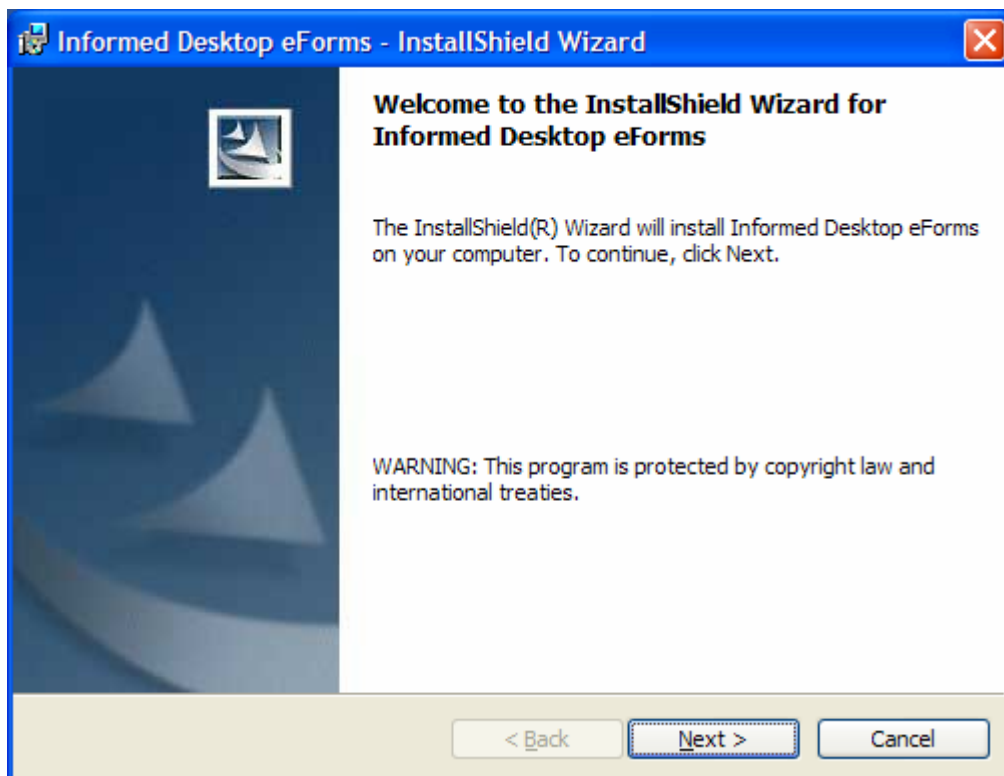
Step 1: Double click the 'Informed Filler Software' link. This file will install the Informed Filler software on your computer. When you click on this link, you will be presented with the following splash screen...



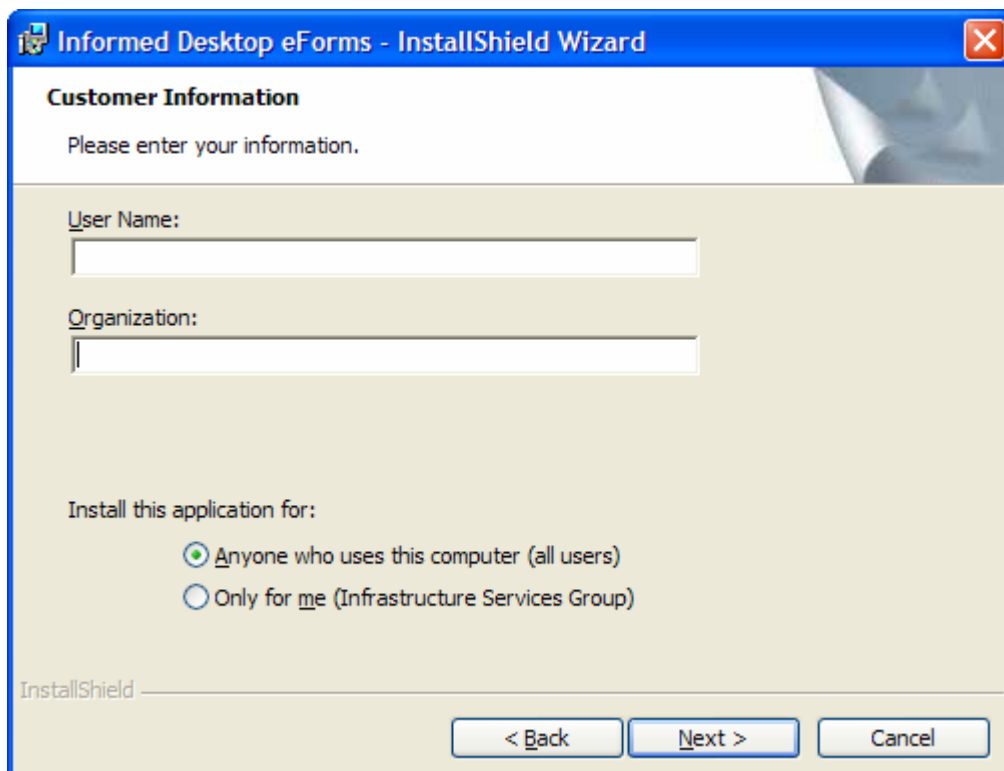
... Immediately followed by this wizard screen.



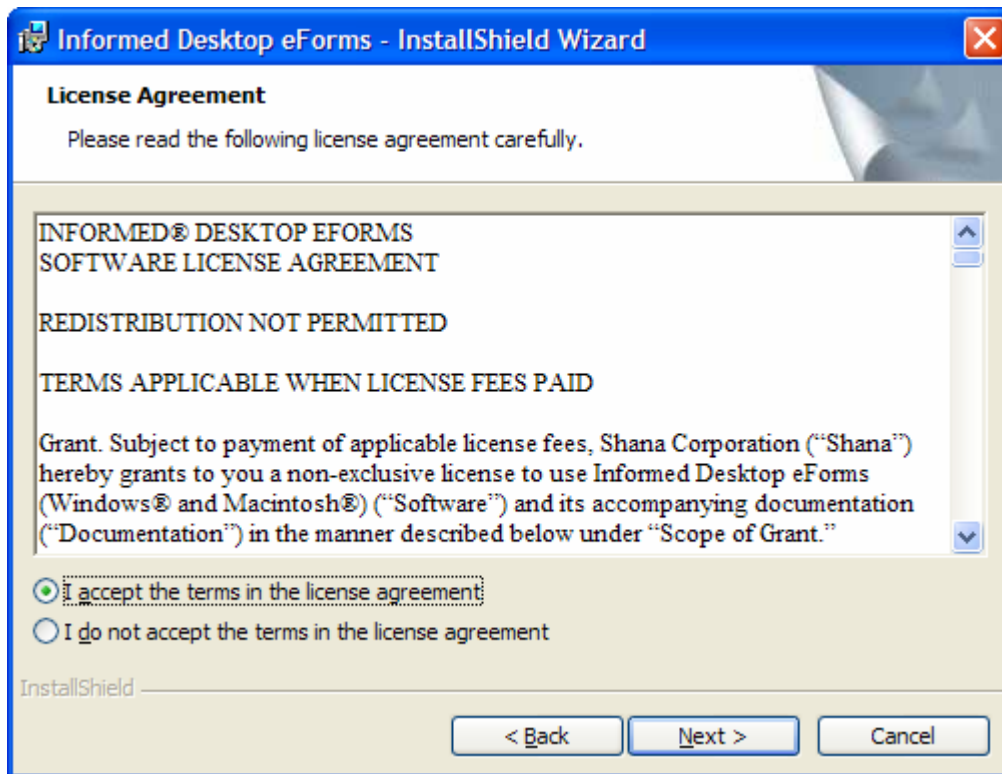
Step 2: Allow the installer to unpack itself and the following step will appear. Click Next.



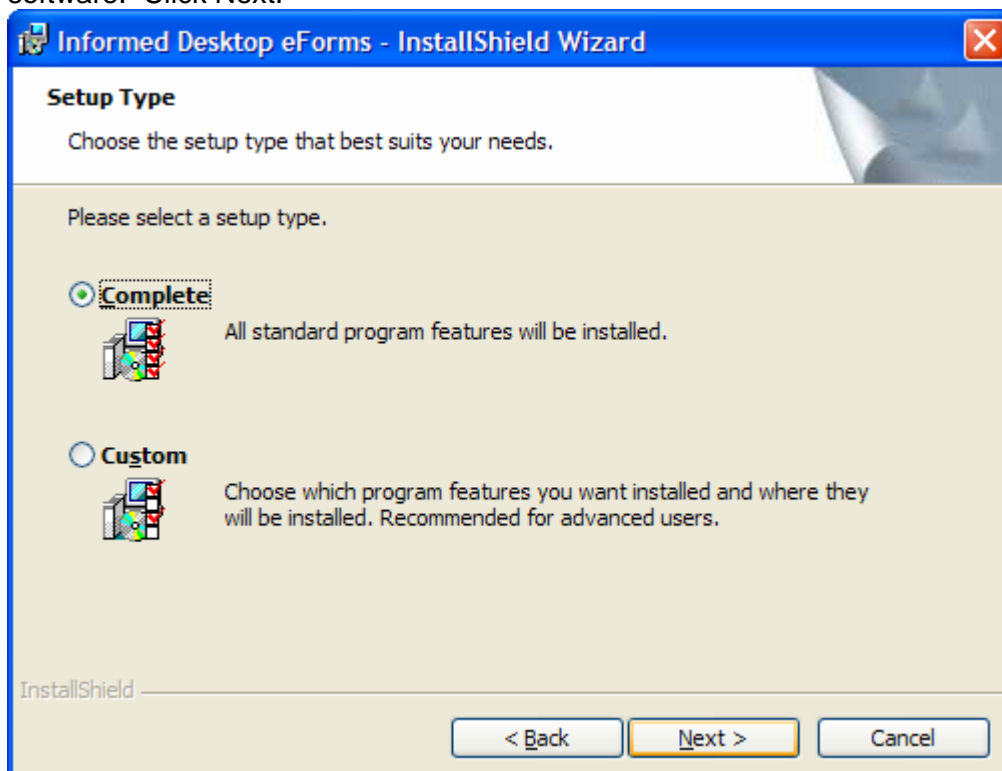
Step 3: Enter your name and organization. Click Next.



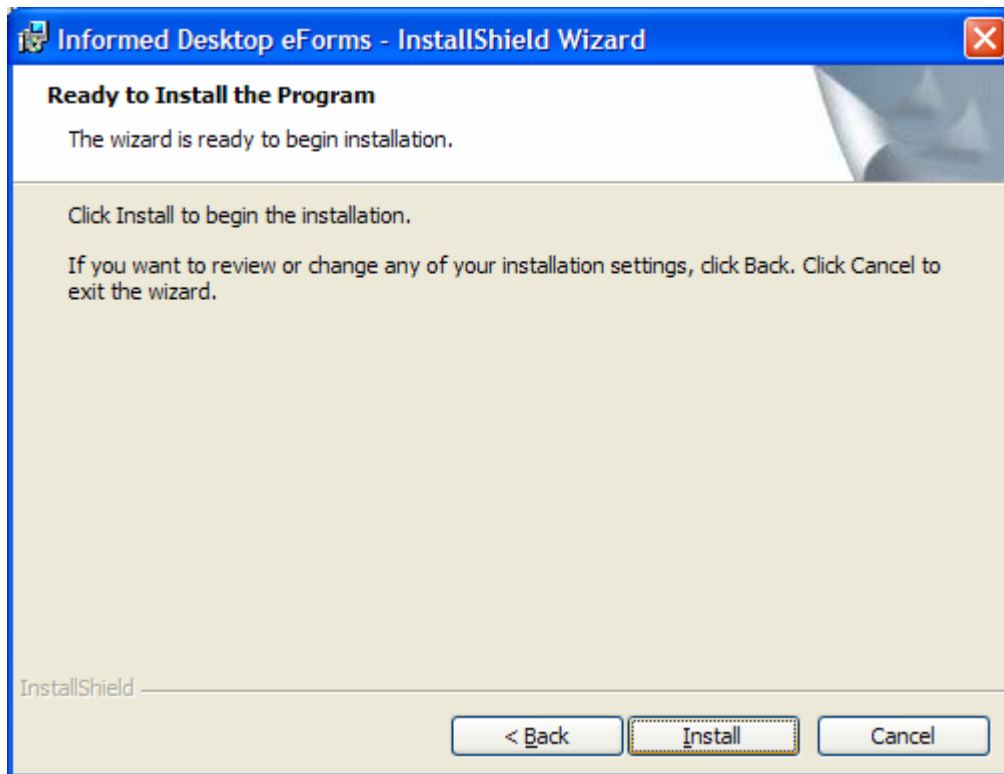
Step 4: Select "I accept the terms in the license agreement" and click Next.



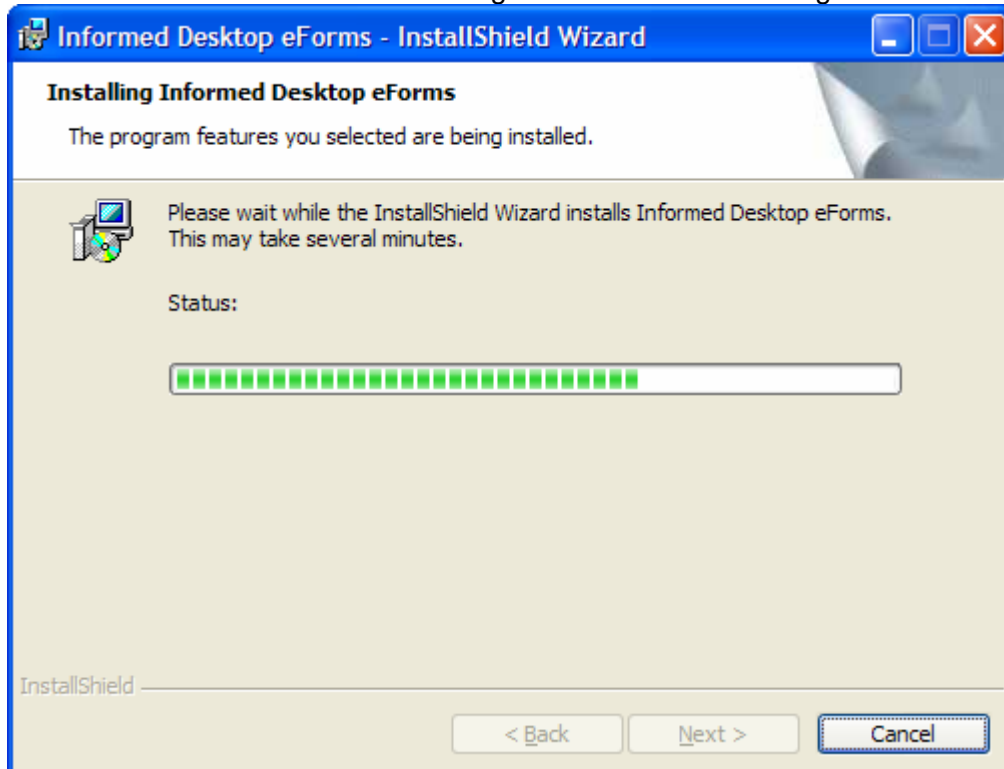
Step 5: Select the 'Complete' installation which is the default installation for this software. Click Next.



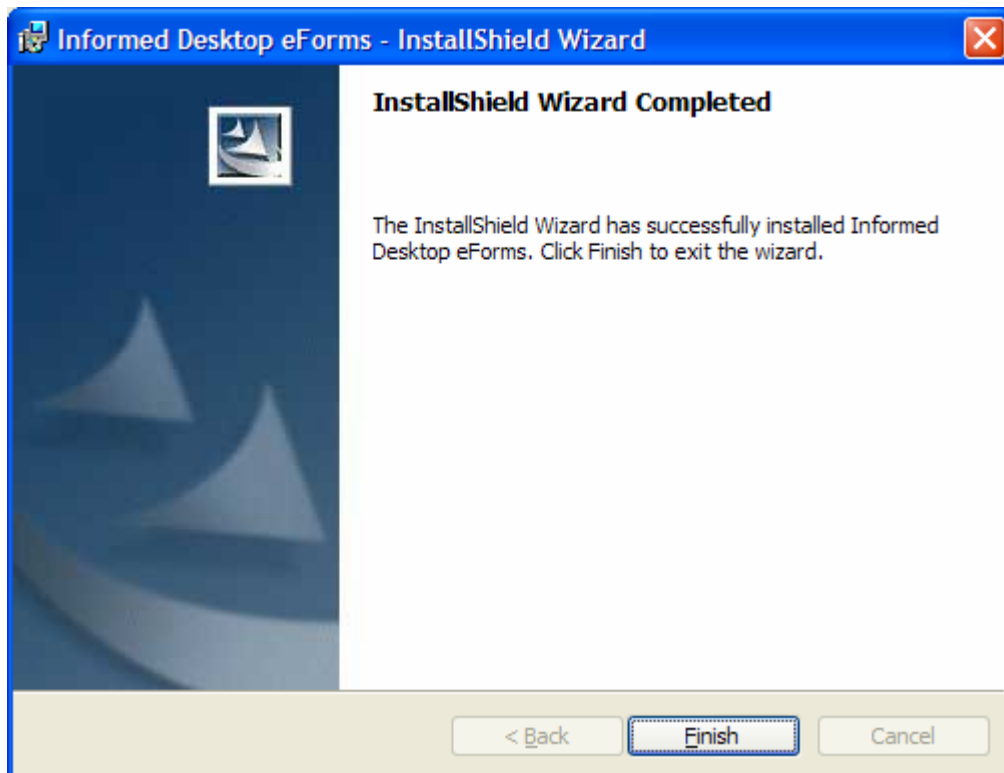
Step 6: On the following screen click Install.



You will see several status bars change while Informed is being installed.

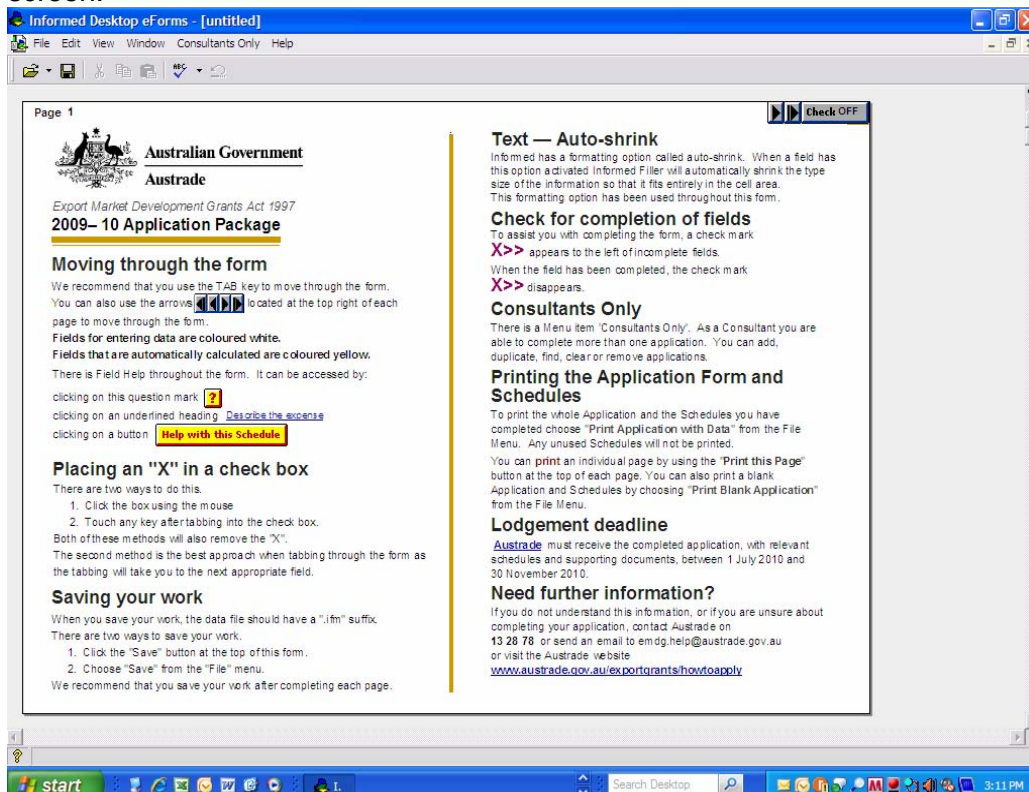


Step 7: When the wizard is completed, click Finish. The Informed Filler software should now be installed on your computer.



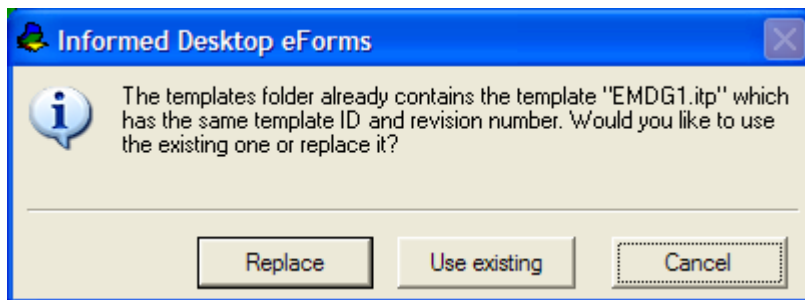
Step 8: Download the Smart Form file from the Austrade website by clicking on the 'EMDG All-in-One Smart Form' link. This will launch the Informed Filler software that you have just installed.

Step 9: If prompted with the 'New Data Document' screen, click 'Add other template', select the EMDG.itp file from the saved location and then click 'New' to ensure the 2009-10 Application Form is loaded. You will then be presented with the following screen.



Follow the instructions to start using the 2009-10 EMDG smart form.

If you are prompted with the following screen instead, simply click the 'Replace' button and the 2000-10 grant year form should open in front of you.



If you experience any problems with installing the software and form please contact Austrade on 13 28 78 and speak to your local EMDG office, or, email us at emdg.help@austrade.gov.au