



SINCE 1933

Recycling and Storm Water – Seize the Day USA Perspective

Philip L. Anthony

Director, Orange County Water District

Commissioner, Santa Ana Watershed Project Authority

Presentation to:

Australia-USA Water Series, Urban Water Management Forum

January 20, 2011



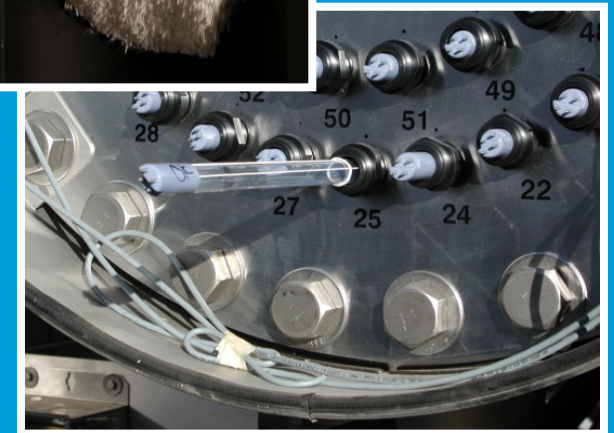
Orange County Water District

- ▶ **Manages the groundwater basin under north/central Orange County, California**
- ▶ **Supplies most of the water for 2.4 million people**
- ▶ **Sources of water to recharge the basin (Annually)**
 - **Santa Ana River flow (127 GL; 33.5 billion gallons)**
 - **Storm water (62 GL; 16.3 billion gallons)**
 - **Rainfall (74 GL; 19.5 billion gallons)**
 - **Imported water – when available (0 to 80 GL; 21.1 billion gallons)**
 - **Recycled Water (89 GL; 23.5 billion gallons)**

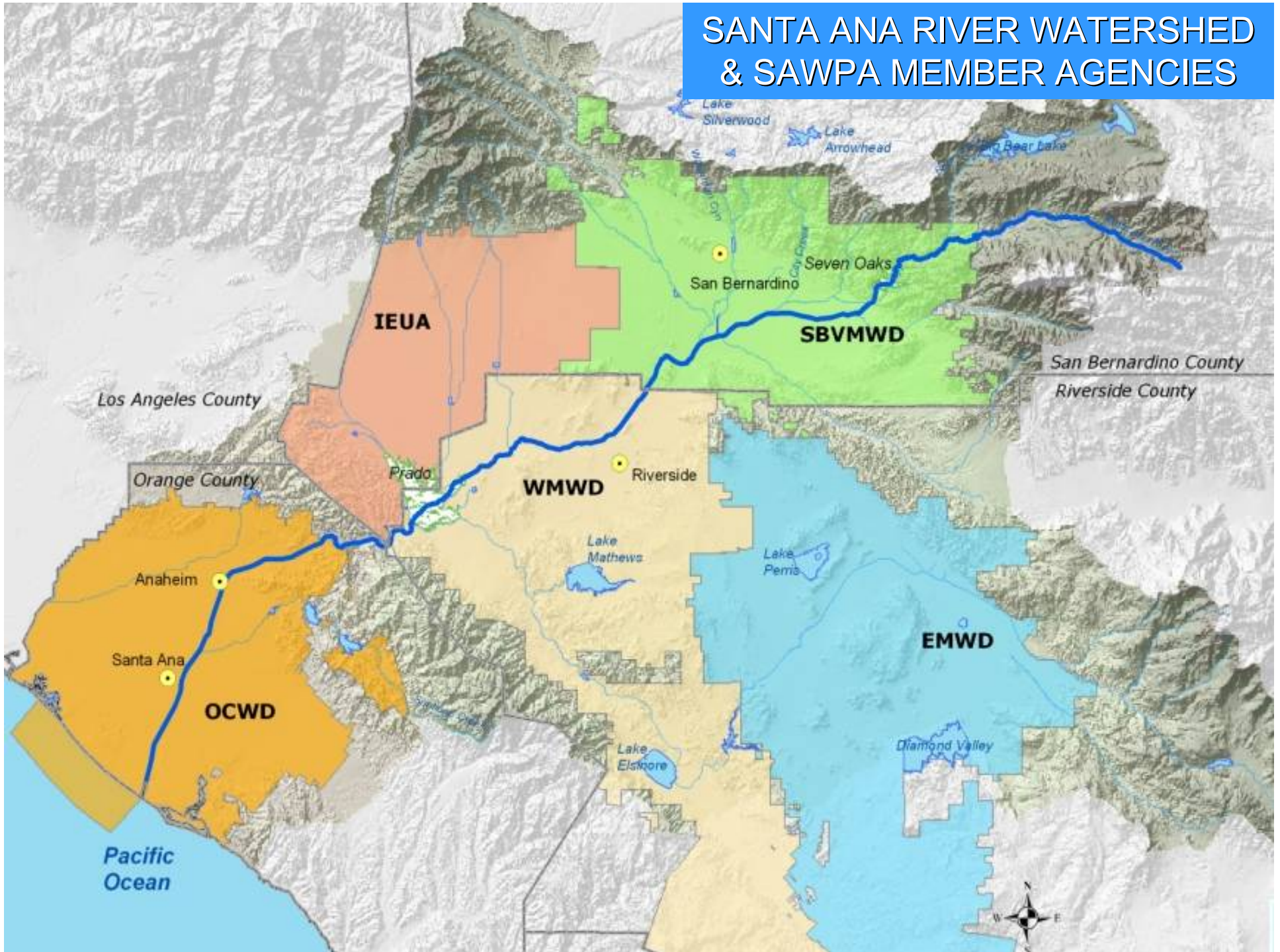


Groundwater Replenishment System Results to Date

- ▶ Largest indirect potable reuse facility in the world (265 megaliters per day)
- ▶ Purifies treated wastewater to near-distilled-quality water
- ▶ GWRS water produced for \$0.39/m³ subsidized; \$0.72/m³ unsubsidized
- ▶ Analyzed for over 400 compounds with all results non-detect or well below permit levels
- ▶ Successful operation since January 2008



SANTA ANA RIVER WATERSHED & SAWPA MEMBER AGENCIES





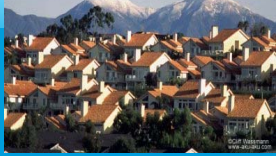
Integrated Regional Watershed Management Plans

- Pioneered by the Santa Ana Watershed Project Authority (SAWPA) since 1998
- Coordinated planning for Santa Ana River (SAR) watershed
- Over 2,000 watershed stakeholders now involved
- Watershed planning now required to allocate California bond funds to local projects



Latest IRWMP for SAR Watershed - Bringing it All Together-

Land Use

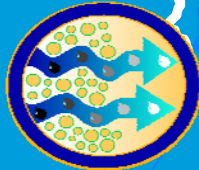


Flood Control and
Stormwater Runoff

Climate
Change



Water Quality
Improvement



Environment
& Habitat

Water
Supply
Reliability



Water
Recycling

Parks, Recreation &
Open Space

Water
Conservation



Environmental
Justice