



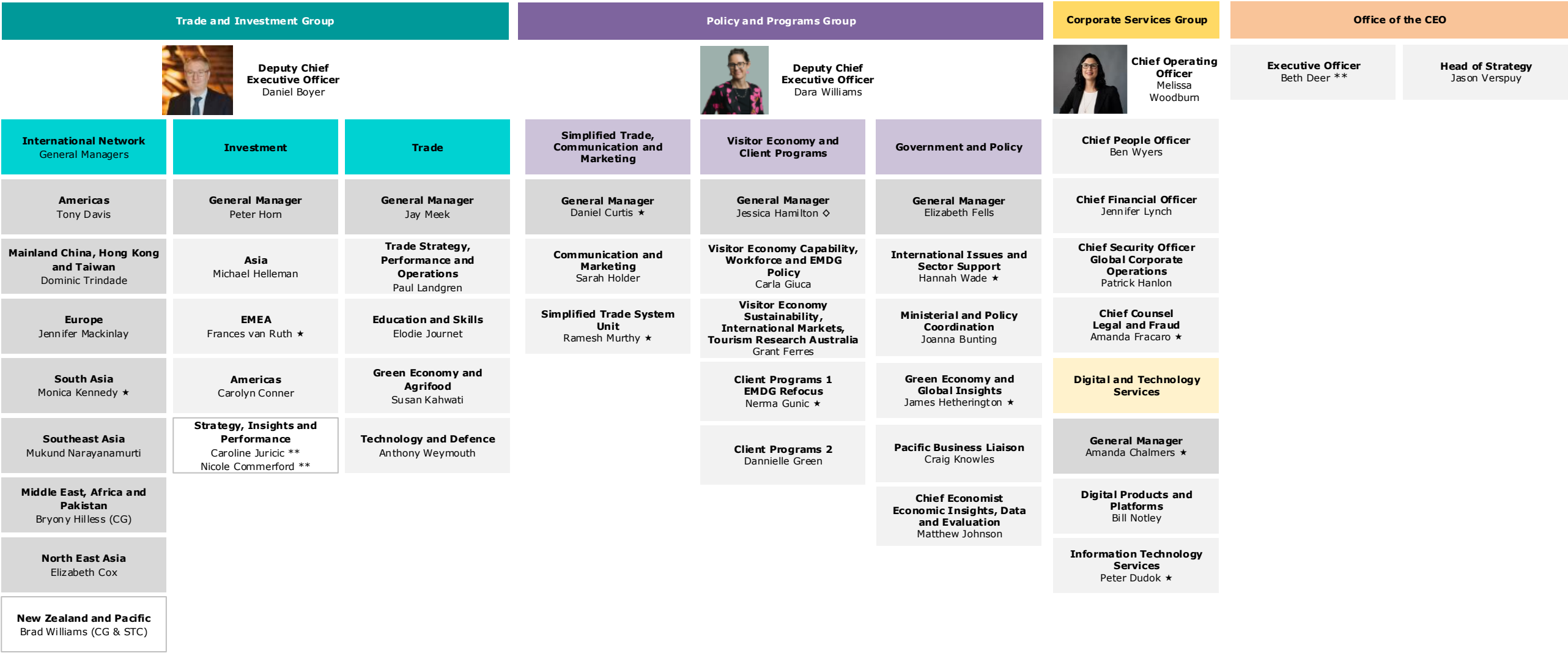
**Minister for Trade and Tourism**  
Senator The Hon Don Farrell



**Assistant Minister for Trade**  
Senator The Hon Tim Ayres



**Chief Executive Officer**  
Dr Paul Grimes



**General Manager**  
Sam Palmer  
(On secondment)

◇ - Temporary Arrangement | ★ - Acting in Role | \*\* - Non-SES Position | CG – Consul General | STC – Senior Trade Commissioner | EMEA – Europe, Middle East and Africa | EMDG - Export Market Development Grants

Organisational structure and position occupants are accurate at the time of reporting.